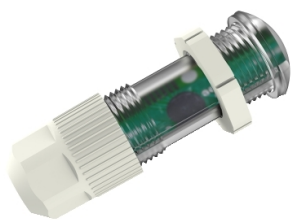


Product datasheet

Specifications



Acti9 analogue indoor light sensor cell

Local distributor code:
408113971 CCT15262

EAN Code: 3606489524647

Main

range of product	Acti9
Product or component type	Switchboard cell

Complementary

Range compatibility	Acti9 Acti9 IC IC100 twilight switch Acti9 Acti9 IC IC2000 twilight switch Acti9 Acti9 IC IC2000P+ programmable twilight switch with time switch function
Cable length	50 m
Light intensity adjustment	2...2000 lux
Mounting location	Indoor
Height	72 mm
Diameter	29 mm
Net weight	17.5 g
Market segment	Residential Small commercial
Compatibility code	Switchboard cell

Environment

Ambient air temperature for operation	-40...70 °C
ambient air temp for storage/ transportation	-40...70 °C
Relative humidity	100 %
IP degree of protection	IP66 front IP40 rear

Packing Units

Unit Type of Package 1	PCE
Number of Units in Package 1	1
Package 1 Height	3.5 cm
Package 1 Width	8.0 cm
Package 1 Length	11.0 cm
Package 1 Weight	21.0 g
Unit Type of Package 2	BB1
Number of Units in Package 2	10
Package 2 Height	10.5 cm

Disclaimer: This documentation is not intended as a substitute for and is not to be used for determining suitability or reliability of these products for specific user applications

Package 2 Width	12.0 cm
Package 2 Length	19.5 cm
Package 2 Weight	285.0 g
Unit Type of Package 3	S03
Number of Units in Package 3	60
Package 3 Height	30.0 cm
Package 3 Width	30.0 cm
Package 3 Length	40.0 cm
Package 3 Weight	2.259 kg

Contractual warranty

Warranty	18 months
----------	-----------

Environmental Data

Schneider Electric aims to achieve Net Zero status by 2050 through supply chain partnerships, lower impact materials, and circularity via our ongoing “Use Better, Use Longer, Use Again” campaign to extend product lifetimes and recyclability.

How this information helps you >

Environmental footprint

Environmental Disclosure

[Product Environmental Profile](#)

Use Better

Materials and Substances

Packaging made with recycled cardboard

No

Packaging without single use plastic

No

[EU RoHS Directive](#)

Compliant

SCIP Number

7267ef83-877b-4767-8e69-8d32bf47494a

REACH Regulation

[REACH Declaration](#)

China RoHS Regulation

[China RoHS declaration](#)

Use Again

Repack and remanufacture

Circularity Profile

[End of Life Information](#)

WEEE



The product must be disposed on European Union markets following specific waste collection and never end up in rubbish bins

Take-back

No